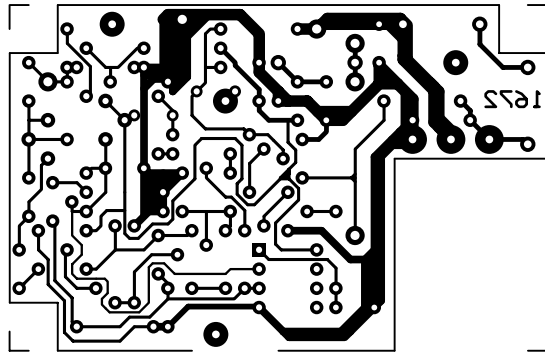
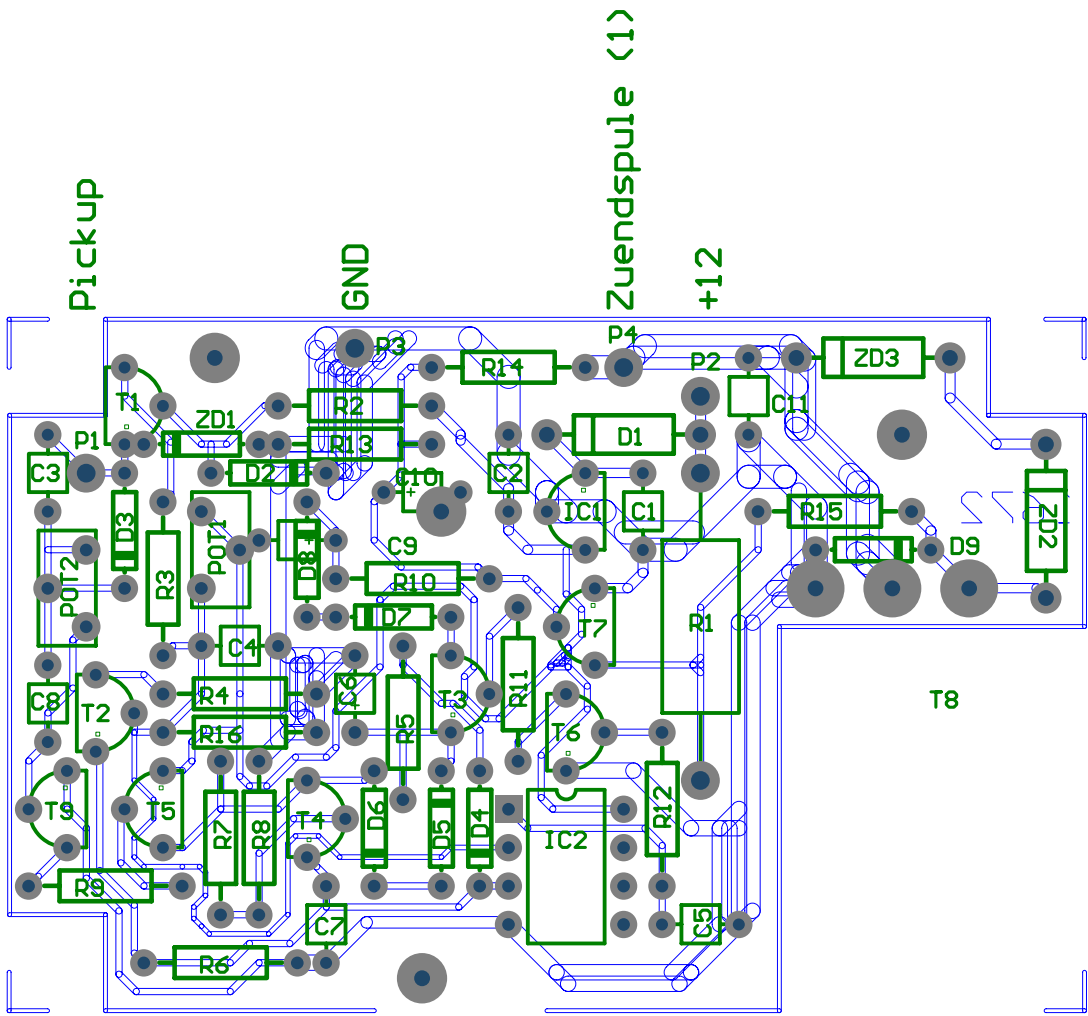


MOTOPLAT





Bauteil	Stck	Bezeichnung				
Diode 1N4005	1	D1				
Diode 1N4005	3	D3	D7	D8		
Diode 1N4148	5	D2	D4	D5	D6	D9
Elko, Tantal 4,7uF	3	C6	C9	C10		
IC LM209H	1	IC1				
IC LM2904	1	IC2				
Kondensator 0.01uF	1	C2				
Kondensator 0.1uF	2	C3	C5			
Kondensator 0.33uF	1	C1				
Kondensator 0.68uF	2	C4	C8			
Kondensator 22nF	1	C7				
Kondensator 6.8nF	1	C11				
Lötstützpunkte für T8	3					
Transistor BC327	3	T2	T3	T5		
Transistor BC337	5	T1	T4	T6	T7	T9
Transistor BU323	1	T8				
Trimpotentiometer 200k	1	POT1				
Trimpotentiometer 500k	1	POT2				
Widerstand 100	1	R10				
Widerstand 100K	1	R14				
Widerstand 10K	1	R8				
Widerstand 1K	4	R3	R9	R11	R13	
Widerstand 2,85k	1	R7				
Widerstand 22 Ohm	1	R15				
Widerstand 220k	1	R5				
Widerstand 226k	1	R16				
Widerstand 330 Ohm/1W	1	R1				
Widerstand 390 Ohm	1	R12				
Widerstand 560k	2	R2	R6			
Widerstand 680	1	R4				
Zenerdiode 1N4192B (180V) oder ZY180	2	ZD2	ZD3			
Zenerdiode 4.3V/0.5W	1	ZD1				